

THE ROUTE

To walk the entire trail will take approximately 2 hours. This should give you plenty of time to read the information on each board as you go round.

The map suggests an order to walk the route, but you may prefer to do bits at a time, divide it over a couple of excursions, or mix it up completely!

Use your smart phone to scan the QR code below and go directly to the Heritage Trail web page to find lots more information, pictures, and the answers to the quiz questions on the other side of this leaflet.



aghs.jimdo.com/heritage-trail/

DID YOU KNOW?

Acocks Green was a rural backwater until 1852, when the railway came.

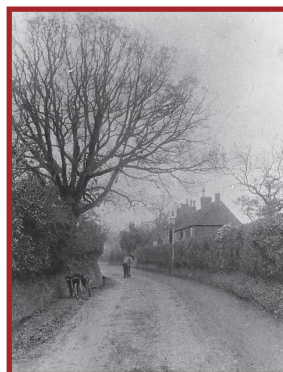
Over a period of 25 years after that, many rich people came to live here.

By 1885 Acocks Green was said to be as sophisticated as Edgbaston.

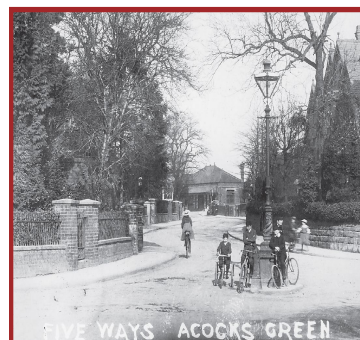
After the Edwardian surge in house-building, Acocks Green was even more successful, with new shopping areas developing outside the centre.

Between the Wars, almost all the fields that still remained were covered with new municipal housing.

Today's centre is not the original location of Acocks Green, and the Green got its current layout as a tram terminus, a few short rows of shops, a library and a rebuilt inn, all from around 1932.



Arden Road, or Quality Lane, with old cottages, taken before 1900. The tree is still standing: now in the middle of the road!



Acocks Green's own Five Ways, with the railway station beyond, taken around 1907.

ACOCKS GREEN HERITAGE TRAIL



An early 1920s view of Acocks Green from near Dudley Park Road

This trail includes eight heritage information boards and pages on the Acocks Green History Society website.

Discover your Acocks Green heritage!

ROUTE MAP & BOARD LOCATIONS



1. Hazelwood Road is an attractive alternative route to walk down. Do you know what the link is between this road and John F. Kennedy?



2. Why is Greenwood Avenue so wide?



3. Why are the small Arts and Crafts style houses on Shirley Road there?



4. Much of the Green used to flood after heavy rain. This photograph from the 1970s shows what it looked like.



Answers to these questions and loads more information can be found at aghs.jimdo.com/heritage-trail/

Why not drop into one of Acocks Green's many cafes and eateries along your route?

There are loads more hidden historical gems to be found in Acocks Green. Why not email us your stories at aghisthoc@hotmail.com?



5. Millennium Green is an initiative by local people to provide an oasis of green space on former allotments



6. What reason might there be for Baskerville House on the Avenue having such a name?



7. What is unusual about the railway bridge at Roberts Road?



8. The canal bridge at Woodcock Lane is the only original one remaining in Birmingham on the Grand Union Canal, and is now statutorily listed.